

Manufactured By: 

DISCOVER

OUR COMMERCIAL GARAGE DOORS

STRENGTH AND SECURITY FOR YOUR BUSINESS



PenguinGarageDoors.ca



PenguinGarageDoors@gmail.com



647-621-3331

4400 / 4401

NON INSULATED INSULATED

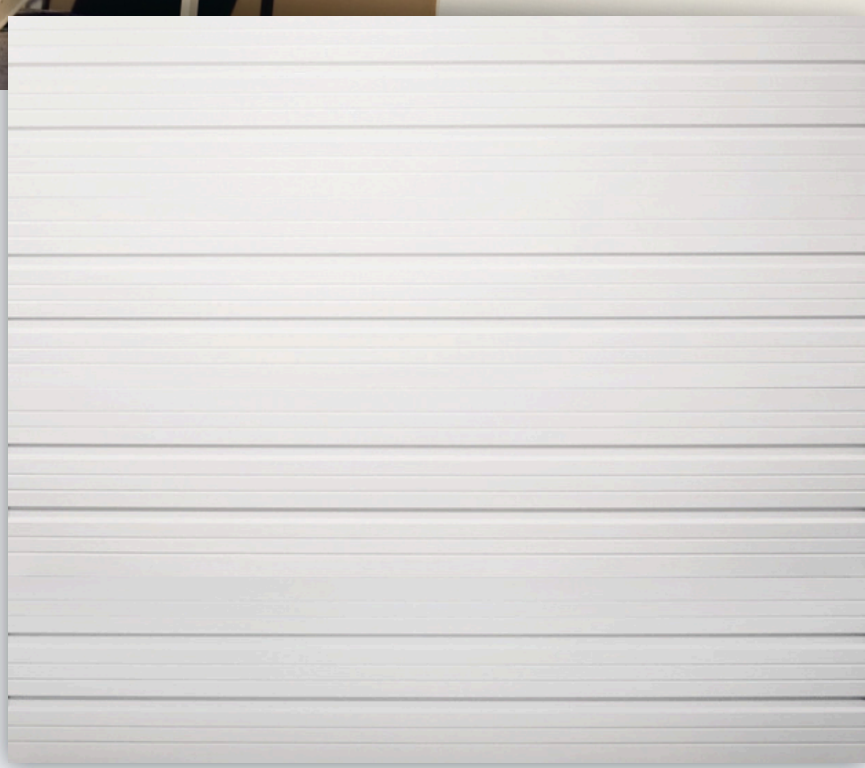


Premium Commercial/Industrial Steel Panel 24 Gauge

COMMERCIAL



↑ SANDSTONE



↑ WHITE

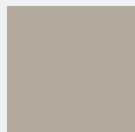
Premium Commercial/Industrial Steel Panel

Constructed of top quality materials designed for each application and engineered for years of dependable operation.

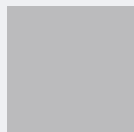
- 24 gauge steel
- 1.0 mil paint with 3 color options
- R-value 6.85 **4401 Feature*
- Vinyl interior skin **4401 Feature*



WHITE



SANDSTONE



GRAY

**Colors may vary from actual product*

4400 / 4401

NON INSULATED INSULATED

Premium Commercial/Industrial Steel Panel 24 Gauge

COMMERCIAL

FEATURES

- 

24 GAUGE STEEL
Panels are smooth finish with two deep ribs and six small grooves. 2" section thickness.
- 

ROLLED SAFETY EDGES ON SECTION JOINTS
Interior flange of panel has a hemmed edge.
- 

17 GAUGE HOT DIPPED GALVANIZED STEEL STILES
Open sides of center and end stiles have rolled edges for safety and added strength.
- 

STILES ATTACHED WITH RIVETS
Stiles are mechanically fastened and adhesive bonded to panel to act as an integral structure of the section.
- 

TONGUE AND GROOVE MEETING RAILS
For superior strength and better sealing against wind, rain, and snow.
- 

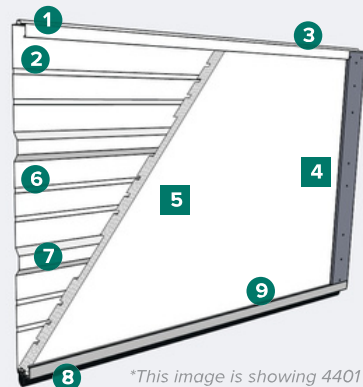
RIGID ALUMINUM RETAINER WITH WEATHERSTRIP
Provides added strength while securing replaceable U-type bottom astragal weatherstrip to help keep the elements out.
- 

GLAZING
Options of 24" x 6" or 24" x 12" windows are available. Optional Series 8000 Full View sections can be substituted for steel sections up to 20' 2".
- 

WIND LOAD
Consult factory for available wind load rated options.
- 

INSULATION
Model 4401 doors are insulated with polystyrene insulation. Interior face of insulation is covered with a vinyl protective skin. Insulation R-value is 6.85.
**4401 Feature*

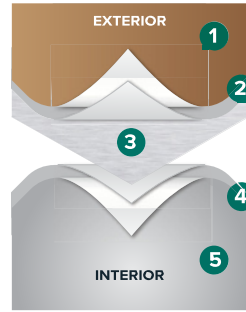
CONSTRUCTION



- 1 Tongue and groove meeting rails
- 2 Hemmed interior flange of panel
- 3 2" thick section
- 4 Heavy duty galvanized steel end and center stiles; fastened and bonded as integral structures of the section
- 5 CFC free expanded polystyrene insulation with vinyl backing (standard on 4401)
- 6 Deep ribbed steel panel, galvanized and painted
- 7 Rolled edge on open side of stiles
- 8 Replaceable U-Type vinyl bottom weatherstrip
- 9 Extruded aluminum weatherstrip retainer

**This image is showing 4401*

PAINT LAYERS



1.0 MIL PAINT SYSTEM

Includes .25 mil rust inhibiting primer and .75 mil exterior top coat that resists fading and chalking, while providing consistent color from panel to panel and more durability.

- 1 Paint - .75 MIL
- 2 Primer - .25 MIL
- 3 Steel
- 4 Primer - .2 MIL
- 5 Paint - .3 MIL

WINDOW & GLASS OPTIONS



24" x 6"



24" x 12"

SIZE OPTIONS

WIDTHS:

UP TO 9'2"	
9'3" TO 12'2"	
12'3" TO 17'2"	
17'3" TO 18'2"	
18'3" TO 24'2"	
24'3" TO 26'11"	
27' TO 28'2"	

HEIGHTS: 21", 24"

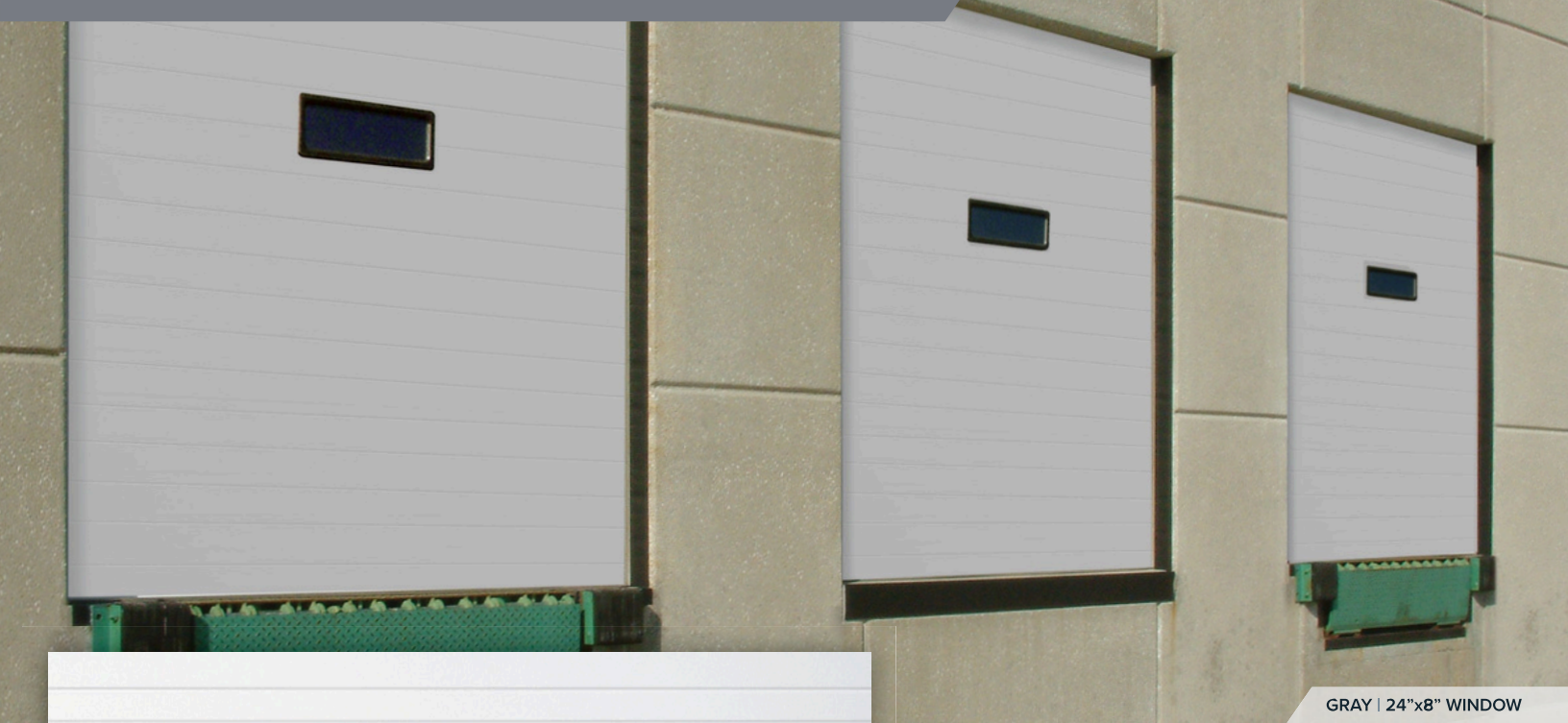
6500

INSULATED SANDWICH

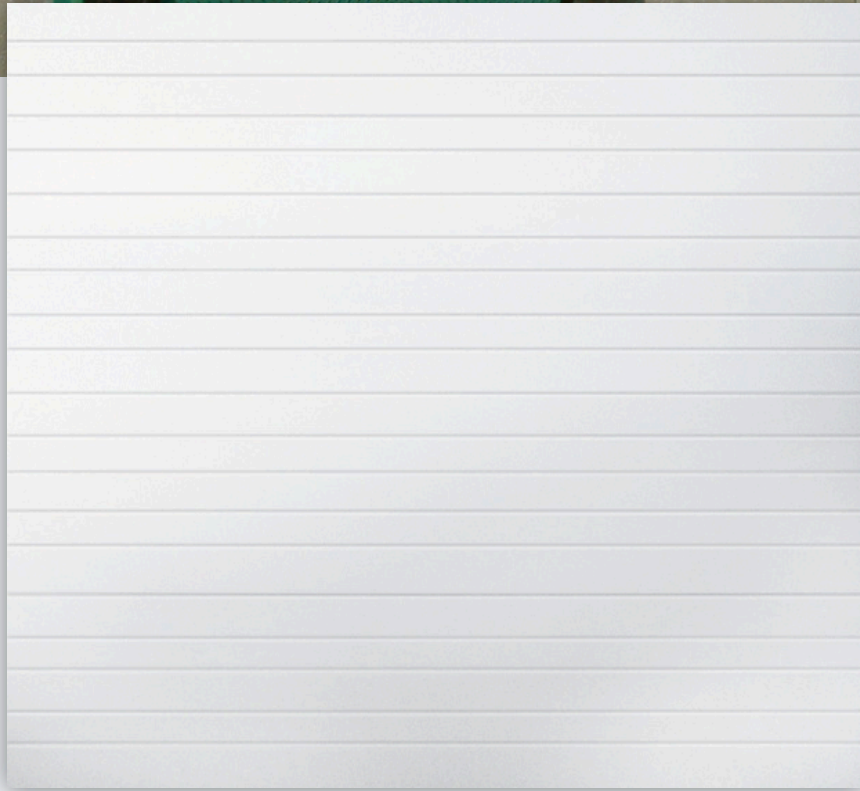


Premium Commercial/Industrial Insulated Panel 3 Layer Sandwich

COMMERCIAL



GRAY | 24"x8" WINDOW



Premium Commercial/Industrial Insulated Panel

Constructed of top quality materials with pebble grain embossed finish, designed for each application, and engineered for years of dependable operation.

- 2" thick insulated 3 layer sandwich
- 1.0 mil paint with 5 color options
- R-value 10.25
- Steel interior skin

WHITE



WHITE



SANDSTONE



BROWN



GRAY



BLACK

**Colors may vary from actual product*

FEATURES

24-26 NOMINAL 24 GAUGE STEEL PANEL AND 26 GAUGE STEEL INTERIOR PANEL
Panels are pebble grain embossed on exterior and interior. Exterior panels are formed with four small grooves. Sections are 2" thick with polystyrene insulation pressure bonded to both panels.

TONGUE AND GROOVE MEETING RAILS
For superior strength and better sealing against wind, rain, and snow.

20 20 GAUGE GALVANIZED STEEL END CAPS
Heavy duty metal stiles give strong rigid support for all hinges, rollers, and operator attachment.

20 20 GAUGE HOT DIPPED STEEL HINGE PLATES
Galvanized steel hinge plates run the full height of each section at all hinge locations to facilitate the attachment of hinges, handles, struts, and step plates.

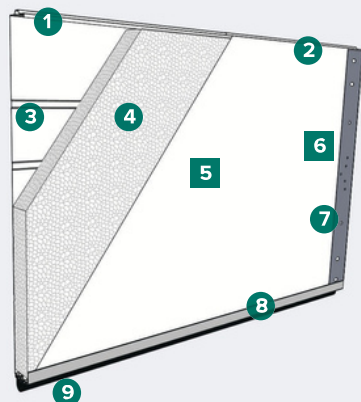
RIGID ALUMINUM RETAINER WITH WEATHERSTRIP
Provides added strength while securing replaceable U-type bottom astragal weatherstrip to help keep the elements out.

GLAZING
Options of 24" x 8" or 24" x 12" windows glazed with insulated glass are available. Optional Series 8000 Full View sections can be substituted for steel sections up to 20' 2".

WIND LOAD
Consult factory for available wind load rated options.

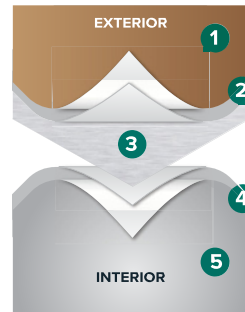
R-VALUE 10.25
Sandwich type construction with polystyrene insulation pressure bonded between two sheets of hot dipped galvanized steel enhances your home's energy savings, makes your door operation quieter, and reduces exterior noise in your garage.

CONSTRUCTION



- 1 Tongue and groove meeting rails
- 2 2" thick section
- 3 Nominal 24 gauge pebble grain embossed exterior skin with shallow ribs
- 4 Full thickness CFC free expanded polystyrene insulation pressure-bonded to exterior and interior skins
- 5 26 gauge pebble grain embossed interior skin
- 6 20 gauge vertical interior hinge plates for hardware attachment; plates extend full height of section
- 7 20 gauge galvanized steel end cap
- 8 Extruded aluminum weatherstrip
- 9 Replaceable U-Type vinyl bottom weatherstrip

PAINT LAYERS



1.0 MIL PAINT SYSTEM

Includes .25 mil rust inhibiting primer and .75 mil exterior top coat that resists fading and chalking, while providing consistent color from panel to panel and more durability.

- 1 Paint - .75 MIL
- 2 Primer - .25 MIL
- 3 Steel
- 4 Primer - .2 MIL
- 5 Paint - .3 MIL

WINDOW & GLASS OPTIONS



24" x 8"



24" x 12"

SIZE OPTIONS

WIDTHS:

UP TO 9'2"	
9'3" TO 12'2"	
12'3" TO 17'2"	
17'3" TO 18'2"	
18'3" TO 24'2"	
24'3" TO 26'11"	
27' TO 30'2"	

HEIGHTS: 21", 24"